



The Path To Your Future


THE
SIXTH FORM
AT RIPLEY ST THOMAS



Welcome

The Sixth Form at Ripley St Thomas offers you a learning experience in a distinctive and supportive environment.

We are a large and successful sixth form, offering a wide variety of courses in a close-knit community. Our tutor team is a small group that provides a unique programme of advice, support and guidance to help you achieve your academic and personal potential and your vision for the future. We look forward to meeting you – and we hope you will join us.



MS A BARNES
HEAD OF SIXTH FORM

“The academy demonstrates excellence in all aspects of its work”

OFSTED

Reasons to study at Ripley



Wide variety of courses on offer



Structured learning with tutor support



Great opportunities after A Level study



Ofsted Outstanding



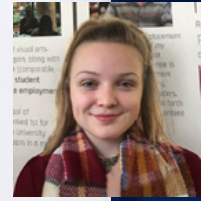
The Sixth Form Centre



Explore the many opportunities to work & learn together

Our strong community enables us to work confidently together and to build the skills necessary as assured and independent learners.

Explore an environment which has been designed and custom-built to enable a professional approach to learning. The surroundings are beautiful and spacious, with a central oak tree which reflects the strength of a secure foundation and branches which reach out and up to new horizons.



“Sixth form helped me build up a lot of confidence in public speaking. Although I was reluctant at first, I spoke in assemblies and even sang carols in front of my year group! This really helped me in my interviews as I could then talk about my portfolio of work more confidently. My tutor was also a massive support in every aspect of my university application, especially my personal statement where I realised I really needed to sell all the skills I had.”

Suzannah

Former Student

BSc (Hons) Product Design; University of Leeds



Theatre Studies



Computer Science



French

“Outcomes for all groups of students are outstanding”

OFSTED

Biology

Aspire to be the best you can

Here at Ripley, you will be supported to achieve your full potential. From the very start of Year 12, we will support you to develop independent learning skills that will enable you to make the most of your study time.

When studying on-site, you can choose from our three staffed and well-equipped learning environments: our university style Silent Study Room, the dedicated sixth form library or the sixth form Study Support Room where you can drop in for more bespoke help from A-Level specialists. When working from home, you'll find all the resources you need to stretch you even further via our virtual learning environment.



Animal Management



Art

Engage in an exciting & diverse programme of leadership & enrichment opportunities

Our successful careers academies for aspiring teachers and healthcare professionals offer students a valuable introduction to a range of career paths.

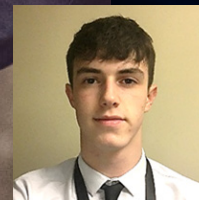
Students experience workshops on a variety of relevant topics, hear from guest speakers in their chosen field, and have the opportunity to gain relevant work experience.

A diverse array of activities and societies including creative writing, debating, philosophy, environmental action and cooking allows students to develop creativity, team working and leadership skills. Studying MOOCs independently offers an exciting way for students to delve deeper into a field of interest and develop their understanding beyond the curriculum.

A wide range of sporting and musical activities provide opportunities for students to flourish.

Additionally students can opt to complete the Duke of Edinburgh's Gold Award and Extended Project Qualification.

Engage with others by taking part in the wide range of unique opportunities.



“A degree apprenticeship allows me to gain both a full degree and invaluable work experience whilst being paid to do so. The support from Sixth Form was a key part in me getting this apprenticeship and I don’t think I’d be here without it. The mock interviews prepared me for the real thing and helped me feel much less nervous. To add to this, support with finding apprenticeships and putting in the application gave me the best chance to be successful.”

Jack
Former Student
Digital & Technology Solutions Degree Apprenticeship;
Jaguar Land Rover

2024/5 Courses at Ripley St Thomas

We offer a wide range of A Level and BTEC courses.

On application, you will be required to choose three courses from the option blocks, available to view on our website.

In some circumstances, it may be possible to choose Music or Further Mathematics as a 4th subject.



View course information
at thesixthform.com

Animal Management (BTEC)
Art
Biology
Business
Chemistry
Computer Science
English Language
English Literature
French
Further Mathematics
Geography
History
Information Technology (BTEC)
Law - NEW
Mathematics
Media Studies
Music
Photography - NEW
Physical Education
Physics
Product Design
Psychology
Religious Studies
Sociology
Spanish
Theatre Studies

Join us in

September 2025

Apply

Applying to The Sixth Form at Ripley St Thomas is easy to do. Simply visit thesixthform.com and fill in the online application form before the deadline stated below.

Entry Requirements

Our standard Sixth Form entry requirement is 5 GCSE Grade 5s including at least a grade 5 in GCSE English Language.

All subjects have specific grade requirements. Full details are available on our website.

Key Dates

Open Evening was held in November 2024

Application Deadline Wednesday 11 December 2024

Applicant Evening Thursday 16 January 2025

Late Applicant Evening Thursday 13 March 2025

Sixth Form Offer Holder Day 24 June 2025

GCSE Results Day Thursday 21 August 2025

Enrolment Thursday 21 & Friday 22 August 2025

Questions

If you have any questions, please email sixthform@ripley.lancs.sch.uk



“We are proud to have been appointed as representatives of the students at Ripley Sixth Form, and we strive to maintain our school community’s friendly, inclusive, and lively atmosphere. Having experienced our first year, the Sixth Form provides a seamless transition from school to higher education or employment.

During tutorials, students develop essential skills such as organisation and independence to help prepare them for their next steps. You can research pathways that interest you and receive one-to-one guidance from an experienced tutor. Additionally, students participate in our creative enrichment programme, which allows them to develop their own interests.

In our second year here, we can confidently say that the Sixth Form’s perfect balance of teacher support and independence, whether academic or personal, has enhanced our potential for success after Year 13.”

**Sixth Form Student
Leadership Team**



Ashton Road Lancaster LA1 4RS

visit thesixthform.com

telephone 01524 64496

e-mail sixthform@ripley.lancs.sch.uk



THE BAY
LEARNING TRUST

All information correct at time of publication.

We reserve the right to withdraw courses that do not recruit sufficient numbers.