



# An Education For Life

RIPLEY ST THOMAS  
CHURCH OF ENGLAND ACADEMY





# Steps to success

ALUMNI

ACADEMY

SIXTH FORM

## Welcome

We are very proud to be able to present Ripley St Thomas to you. We hope this Open Evening will give you some insight into who we are and what is important to us.

Ripley is a large and historic academy with over 1700 pupils aged 11-18 on roll, 400 of whom are in the sixth form. We are a strong and close-knit community, dedicated to hard work and excellence within a Christian context.

Educating children is a great responsibility and a privilege.

We believe that every young person has gifts and talents waiting to be discovered and, should you choose Ripley, we can assure you that your child will be given every opportunity to succeed and enjoy learning.

Education is, of course, about far more than examinations, important though they are! Our mission is to develop our young people in body, mind and spirit. Ripley has so much to offer beyond the taught curriculum and we find that pupils who get involved, join in and take advantage of all that is available, get the most out of school and are best prepared for life ahead.

We look forward to meeting you.



**MRS C WALMSLEY**  
EXECUTIVE  
HEADTEACHER



**MR E GODDARD**  
HEADTEACHER



# Tradition & Innovation

## Since 1864

**1864**

The Ripley Hospital was officially opened on November 3rd 1864. Founded by Thomas and Julia Ripley, it was endowed for the education of an equal number of boys and girls – altogether 300 in number.

**1939**

The work of the Hospital continued until the outbreak of World War II in 1939, when the building was requisitioned by the army, and later the government requisitioned Ripley for another three years for use as an emergency Teachers' Training College.

**1966**

After the trainee teachers left, the building became a National School, then a boys' secondary modern school until 1966 when Ripley Boys' and St Thomas Girls' Schools amalgamated to become Ripley St Thomas Church of England School.

**1996**

In September 1996, Ripley was designated a Language College.

**2009**

In April 2009, a new centre for The Sixth Form at Ripley St Thomas opened, giving Year 12 and 13 students a fully independent space to be proud of.

**2011**

In May 2011, the school was re-designated Ripley St Thomas Church of England Academy. The ethos and beliefs of the school remain true to the heritage, as founded by Thomas and Julia Ripley.

**2017**

Ripley St Thomas sets up The Bay Learning Trust, a multi-academy trust bringing together a community of like-minded schools.



The Ripley Hospital



Sixth Form



Julia Ripley



Main School building





A world of  
hope & opportunity



## A tradition of academic excellence

**‘We provide a rich curriculum which enables children to build their knowledge and skills across a range of different subject areas. We want every child to find his or her niche and be able to experience success – and enjoy life at Ripley in the process.’**

Results are consistently above the national average across a wide range of subjects at GCSE and A Level. Progress is overseen by a skilled team of tutors and support staff, and parents are kept closely informed and involved throughout the year.

We have high expectations of all our pupils and are determined that each one will have the opportunity to be the best they can be during their time with us.

We believe that co-curricular activities are also a critical part of what it means to become a rounded and successful individual and, as such, we offer a broad range of opportunities to supplement and enhance the experiences which pupils gain in the classroom.

## A culture of high expectations

Pupils study a broad range of subjects throughout Key Stage 3 and can specialise further in Key Stage 4. Our young people are expected to work hard to achieve what they are capable of and to meet the demands of the GCSE courses.

Alongside our broad curriculum there is a sharp focus on literacy throughout the academy and across all subjects. Literacy skills underpin all learning and it is vital that young people become highly literate if they are to succeed in our world. Literacy skills are developed through reading in particular and Ripley is very much a reading school. We have had many best-selling authors, including Phil Earle, Michelle Pave, and Aisling Fowler come to visit and encourage pupils over the past few years.

*“Leaders have designed an ambitious curriculum that motivates and enthuses pupils.”*

OFSTED 2022







A world of  
tradition & innovation





*“The distinctiveness and effectiveness of Ripley St Thomas as a Church of England school are outstanding.”*

## A rounded education

We believe that the development of character is an essential part of a rounded education.

Belonging to our community at Ripley is a deeply formative experience and has a significant impact on pupils' personal development. Our Christian values underpin all we do here, and pupils, through their time with us, are encouraged to live in the way that Christ lived and taught. Pupils are encouraged to learn self-discipline, self-control, self-reliance, respect for others and how to cope with the ups and downs of life. A structured programme of opportunities across all year groups helps develop character and sound values.

Year 7	All pupils complete the Archbishop of York's Young Leaders' Award
Year 8	The Talents initiative, where pupils are given £1 and challenged to raise as much money for charity as possible with it.
Year 9	All pupils enter for the Tri-Star award which is given at bronze, silver and gold levels for personal challenge, service and achievement.
Year 9-13	The Combined Cadet Force (RAF) offers a wonderful opportunity to develop a range of leadership and practical skills — and fly in a plane!
Year 10-11	The Ripley + award recognises leadership and service; silver medals and two gold medals are awarded each year.
Year 10-13	The Duke of Edinburgh award offers pupils the opportunity to achieve Bronze, Silver and Gold awards through challenges and expeditions.
Year 12-13	Our ASPIRE programme in the sixth form recognises Attendance, Success, Progress, Initiative, Relationships and Endeavour.

Young people develop hugely through getting involved in these programmes and it is constantly heart-warming to follow the career paths of many of them who are now having a significant impact on their communities across the world.



A young girl with long blonde hair, wearing a school uniform (white shirt, blue tie, dark vest) and safety goggles, is smiling while using a hand plane on a wooden workbench. She is in a workshop setting with blue storage bins in the background. The text "A world of achievement & success" is overlaid on the right side of the image.

A world of  
achievement & success



## To serve, to lead

**As a Church of England academy we have a deep sense of Christian community.**

We build strong relationships not only in the way we live out our lives together but also in our corporate worshipping life. Pupils and staff begin each day with an act of collective worship, and services are held throughout the year to celebrate the Christian festivals in our school chapel. The spiritual dimension of our life together also finds expression through the formal curriculum alongside social action and charitable fund-raising.

Pupils are encouraged to develop a faith that will support and sustain them through their lives.

**We expect our pupils to be good citizens and to make a tangible difference in the world.**

It is of great importance to us that our young people understand their responsibilities to each other and to the different communities in which we live. The principle of serving one another is central to how we live and work together at Ripley. We are immensely proud not only of the care and compassion shown by pupils to each other, recognised by Ofsted, but also of the extraordinary range of fund-raising events organised by pupils throughout the year. The academy has relationships with a number of local and international charities which bring significant benefits to the school community as well as to the charities themselves.



As a Christian community, we aim to provide an education which enables all members of our Ripley family to flourish academically, personally and spiritually. Through acts of faith, hope and love, we encourage our young people to live well, to serve others, and to make a difference in the world.

*“Pupils and students are highly articulate, self-motivated and determined to succeed.”*

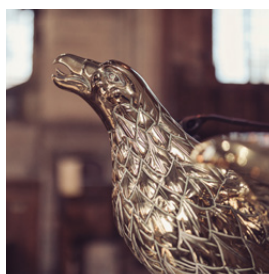
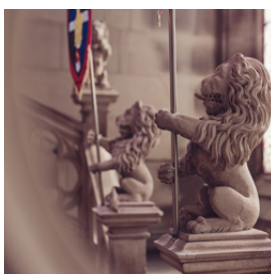
OFSTED 2022



A young man with glasses, wearing a blue uniform with a 'GCSE' patch, stands next to a brown horse with a white blaze on its face. They are in a stable with wooden walls and a corrugated metal roof. A sign on the wall reads 'Our Goats Bluebell' and 'Our Goats Bracken'. The horse is eating hay. The text 'A world of endless possibilities' is overlaid on the image.

A world of  
endless possibilities





# RIPLEY ST THOMAS

CHURCH OF ENGLAND ACADEMY



Ashton Road Lancaster LA1 4RS

visit [ripleystthomas.com](http://ripleystthomas.com)

telephone 01524 64496

e-mail [admin@ripley.lancs.sch.uk](mailto:admin@ripley.lancs.sch.uk)



THE BAY  
LEARNING TRUST